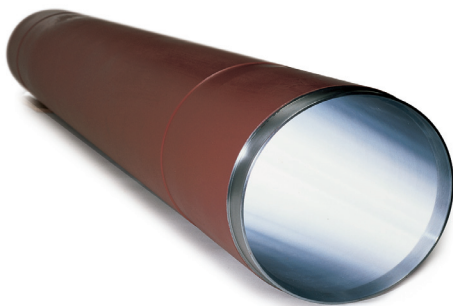


INTERNALLY CHROMED CYLINDERS

THE BEST TECHNOLOGY FOR THE BEST QUALITY

ADVANTAGES:

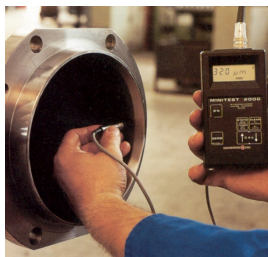
- The **internally chromed** pumping cylinders, **have always been** our top quality and most appreciated products.
- The purity of the chromium, its high hardness and its remarkable thickness ensure **an extremely long product life**, protecting it from wearing and oxidation (rust), and improving the performance of the pumping piston.
- The cylinders are supplied already processed and painted, **ready for the assembly**.
- Each cylinder is punched with a serial number in order to identify its life process and manufacturing cycle.



The inner chrome-plating avoids the oxidation and rust problems; likewise the very high hardness increases the life of the product.



The constant monitoring of all processing steps and chemical process can offer to our customers a high quality product.



TECHNICAL CHARACTERISTICS:

- ST52.0 (E355) Steel pipe.
- Roughness less than Ra 0,50.
- Chromium thickness from 200 to 300 microns.
- **Chromium hardness up to 900 Vickers HV (67 HRC).**
- Anti rust paint.



DALCOM® s.r.l.

MACHINERY-EQUIPMENT-SPARE PARTS

Ravenna, Italy

Tel. (+39) 0544-451513

Fax. (+39) 0544-451361

www.dalcom.it - info@dalcom.it

"A World of Technology" >>>